



Stage One Report (V2)

EUROPEAN CHAMPIONSHIP 40+ 1/8 IC OFF ROAD 2024





1	INHALT	
2	Introduction	2
3	Location	2
4	Club contacts.....	3
5	Emergencies.....	3
6	The track	3
7	Rostrum	4
8	Pitting.....	4
9	Race Control.....	5
10	Scrutineering (TECH.)	5
11	Preliminary timetable.....	6
12	Site plan	7
13	Tires	7
14	Network access	7
15	Media.....	7
16	Travel	8
16.1	Air travel.....	8
16.2	Rail travel	8
16.3	Travel by Car.....	8
17	Hotels.....	8
17.1	Hotel room contingent for the event.....	8
17.2	Hotels/Pensions Landsberg am Lech	9
18	Camping/Parking.....	9
19	Catering.....	9
20	Local amenities	9

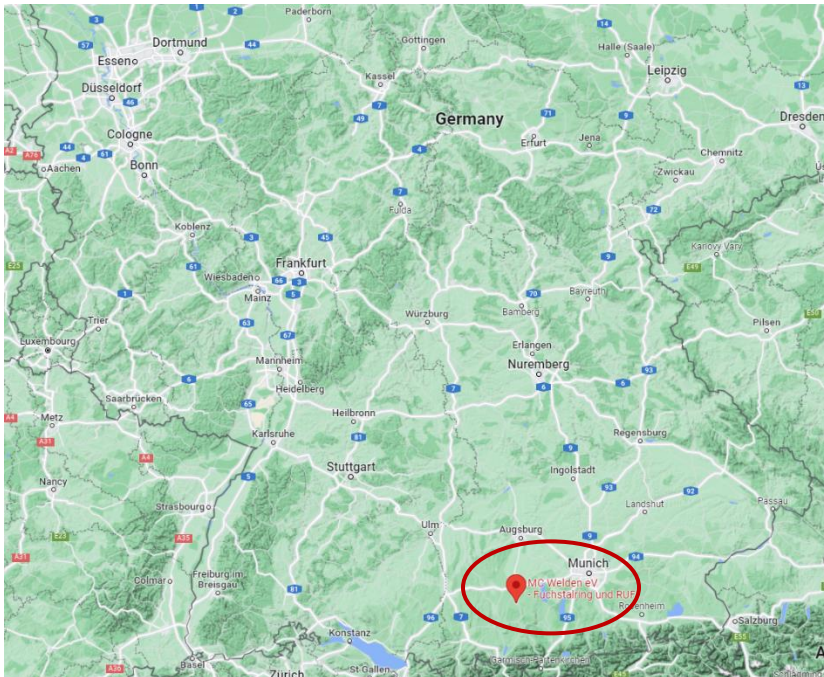
2 INTRODUCTION

The Fuchstaling is in southern Germany and operated by the MC Welden e.V. for over 30 years now. The Venue is close to the motorway A96 and very well connected to the Munich (MUC) or Memmingen (FMM) Airport. Next train station is Kaufering which is approximately 20km away from the track. The track itself is a mixed surface track with technical specialties and a total length of approx. 340m and a minimum width of 4m. The rostrum offers comfortable space for up to sixteen drivers per run and hosts the venue as well for timekeeping and race directors/officials. Included in the track area are two covered areas for pitting, one with just a roof and another one fully covered for catering purposes. Power is available around the whole track and camping areas are also close by directly on the club area at the track.

Based on the more than 3 decades of experience in RC-Racing and the existing facilities we were already hosting a substantial number of national and international events like German Championship Runs (1/8 IC OFF ROAD Buggy: 1998, 2001, 2005 and 2011, 1/8 IC OFF ROAD Truggy 2011) or manufacturer events for Thunder Tiger (Team Associated) or Mugen and several events for regional club racing cups and nationals' qualification runs.

All necessary information of this report and further updates on the application would always be up to date on our website www.mcwelden.de/euro40plus2024.

3 LOCATION



Geographical location of the MC Welden Fuchstaling:

Energiestrasse 2
86925 Fuchstal
GERMANY
Google PLUS Code: WV2+63
Fuchstal

Postal address for correspondence about the event:

Fabian Schneider
Schulstrasse 40
86925 Fuchstal
GERMANY

4 CLUB CONTACTS

Club Chairman:	Werner Ruf	mail@mcwelden.de	+49 (0)172 6494930
Club Timekeeper:	Florian Diehm	teamleiter@mcwelden.de	+49 (0)179 2956307
Club Race Director:	Fabian Schneider	info@mcwelden.de	+49 (0)151 21256062

5 EMERGENCIES

Registered first-aid persons will be onsite and first aid kits are available in race control. The next hospital (Klinikum Landsberg am Lech) is 20km away and a first responder service is available in the village of Leeder 1km away from the track.

6 THE TRACK



The lap starts in front of the rostrum through a long curve into the Bazidrom, a huge, banked curve followed by a long straight until the first jump with a small table. Then comes our 90° corner table and it continues over various curve combinations and different surfaces (AstroTurf, grass grid, clay) back to the Omega and the later triple jump. Followed by a short piece of tar with the time loop. A small corner jump is in front of the hanging curve. After the hanging curve there is a chicane and a small washboard before it goes

back on the start-finish straight. The pit entrance is at the beginning of the starting straight in front of the rostrum.

7 ROSTRUM



The rostrum is approx. 20m wide, 3m front to back and 3m high at foot height. As visible on the picture, it has a solid roof with perfect weather protection. Shelves for general usage are at the back of the rostrum and the timekeeping/race direction is also included. Monitors for timekeeping are installed in the pit lane area on the left and right entry, the rostrum can be accessed by two stairs in the middle and the left-hand side.

8 PITTING



The pitting area is found under the upper covered area where in total 25m x 20m of covered space including electrical power and several timing monitors are available for pitting. A further timing-screen is in the catering area. The camping space on the other end of the location will be also equipped with electrical power during the event but may not be used as pitting area during the day. Electrical power is connected to the public grid thus there will be no issues with broken supplies or defective power generators.



German SCHUKO power socket



SCHUKO plug



European plug



Travel adaptor for german sockets

As power sockets we use are German standard SCHUKO-sockets which can be used with SCHUKO-plugs, European plugs, or travel adapters.

9 RACE CONTROL

A permanent race control is located at the right-hand side of the rostrum. Dedicated power, UPS power back up, dual timing loop, ethernet connection for live timing and internet connection is permanently available. The Location of the race director and referees is close by at the rostrum and in the room for timekeeping in addition to ensure proper communication within the race control personnel verbally and visually. The speaker system offers proper sound in all relevant areas of the track by dedicated speakers. As timing software, we use redundant laptops with the software Race Control 2004 and a myLaps decoder with software version 4.5.

10 SCRUITINEERING (TECH.)

The area for tech. Inspection will be in a separate container beside the track.

11 PRELIMINARY TIMETABLE

Wednesday: 28.08.2024

12:00 Uhr: Opening of the campsite and paddock, arrival possible

Thursday: 29.08.2024

12:00 – 20:00 Uhr: Tire issue
19:00 – 21:00 Uhr: Barbecue, Grill dinner

Friday: 30.08.2024

08:30 – 13:00 Uhr: Training
13:20 – 14:00 Uhr: Lunch break
14:00 – 18:00 Uhr: Controlled practice
18:00 Uhr: Teammanager Meeting
19:00 Uhr: Opening ceremony, entry of the nations, welcome
20:00 Uhr: Driver's banquet 1 dinner and 1 beer free for drivers
21:00 – 01:00 Uhr: Party

Saturday: 31.08.2024

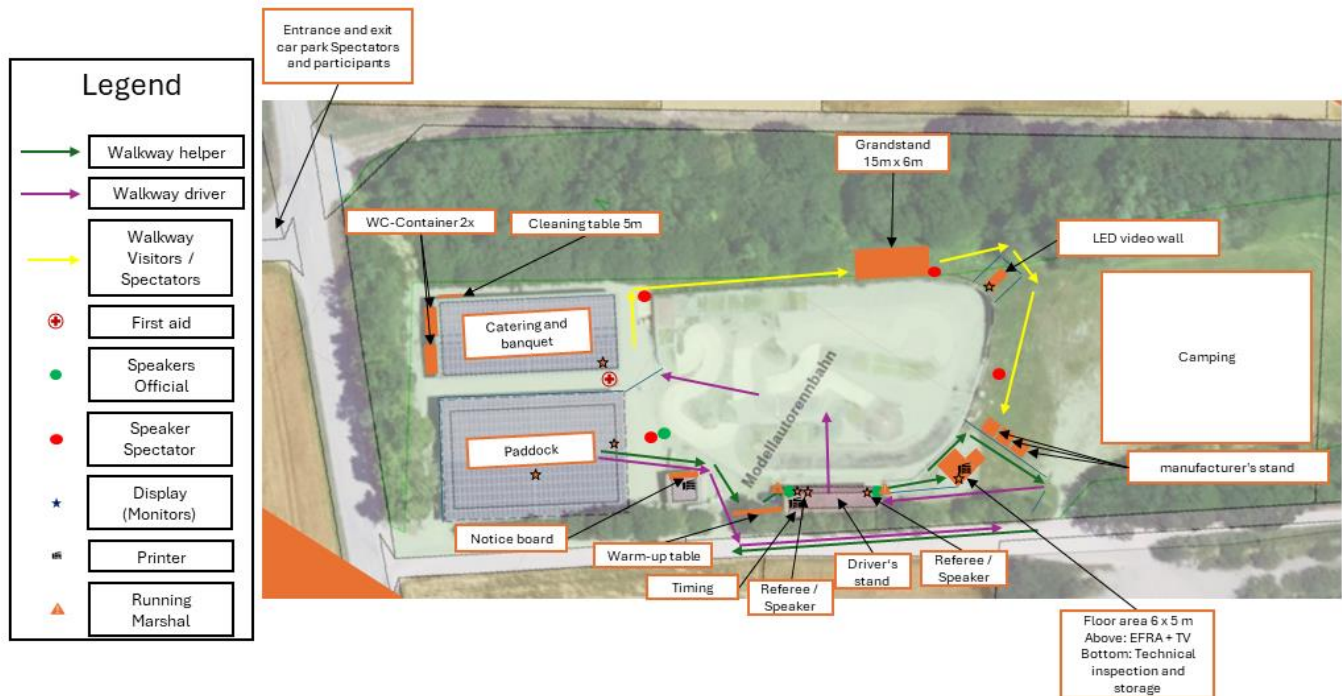
08:00 – 12:40 Uhr: Heat 1+2
12:40 – 13:00 Uhr: Lunch break
13:00 – 17:40 Uhr: Heat 3+4
17:45 Uhr: Teammanager Meeting
18:00 – 20:30: Sub-Finals

Sunday: 01.09.2024

08:00 – 15:30 Uhr: Sub- Finals
15:45 Uhr: Start of the main finals
18:30 Uhr: Price giving ceremony

All information without guarantee, subject to change

12 SITE PLAN



13 TIRES

The controlled tire Matrix Nebula Soft will be used for this event. Further details regarding the control tire can be taken out of the official EFRA tire letter which can be downloaded from either <https://efra.ws> or the event homepage <https://euro40plus.mcwelden.de>

14 NETWORK ACCESS

The site is covered by 5G-network which works fine in combination with EU-roaming and mobile phones as access for live timing. The race officials and media are using a dedicated network on site for security and reliability reasons.

15 MEDIA

Additional platforms and specific areas for media purposes will be available during the event if necessary. Additional cables for media coverage can be applied wherever needed across the entire site.



16 TRAVEL

The Fuchstalring is easy to find under the following address:

Energiestrasse 2

86925 Fuchstal

GERMANY

Google PLUS Code: WV2+63 Fuchstal

16.1 Air travel

The closest airport is the Memmingen Airport (**FMM**) with 65.6km distance and approx. 45min. of driving. Memmingen offers usually cheap connections to several locations in Europe.

The best option for best international and national connections is the Munich Airport (**MUC**) with 105km distance and approx. 1hr. 10min. of driving by car.

16.2 Rail travel

Recommended train station is Kaufering with good connections East (Munich) and West (Zurich). The Train station is approx. 20km away from the racetrack. We do not recommend going only by train as there is no direct connection from the track to the train station and a (rental)car is still mandatory to reach the facility in a convenient way.

16.3 Travel by Car

Please find the address in the section above, a route planning tool will be available prior to the event directly on our event website at euro40plus.mcwelden.de

17 HOTELS

There are some smaller pensions and hotels available close to the track within a range of 4km. Further hotels are available in Landsberg am Lech, approx. 20km away from the track.

17.1 Hotel room contingent for the event

We blocked a contingent of 50 rooms in the Vienna House Easy in Landsberg am Lech which will be available until 05.07.2024. After this date there will be no guarantee to get a hotel room for the event. To book a room please call +49 (0)8191/ 92900 or write an email to info.easy-landsberg@hrg-hotels.com using the Password "40+ Masters" to book a room. The rates per room are special discounted for participants:

92,00€/night for a single room incl. breakfast

117,00€/night for a double room incl. breakfast

We also arranged early breakfast times in the hotel at the weekend from 6:30 onwards.

17.2 Hotels/Pensions Landsberg am Lech

Name	Address		Phone
Vienna House Easy	Graf-Zeppelin-Straße 6	86899 Landsberg am Lech	+49 (0)8191 92900
Landhotel Endhart	Erpftinger Str. 19	86899 Landsberg am Lech	+49 (0)8191 92930
Hotel Rid	Bahnhofstraße 24	86916 Kaufering	+49 (0)8191 6580

18 CAMPING/PARKING

If you plan to stay at the track in your caravan, camper or tent, please register yourself a spot in our camping area. This can be easily done by using the form for camping registration on the event homepage <https://euro40plus.mcwelden.de>. The venue offers toilets and wash basins, disposal for chemical toilets or permanent water connections will not be available during the event. Showers will be provided in the facilities of the local football club in Leeder.

19 CATERING



Catering will be provided on site, lead by one of our club members who is a professional chef. We will offer a special menu with local food during the day, breakfast offerings at all days of the event and daily dinner specials created and cooked in our own professional kitchen in the RC-Indoor-Track on-site.

20 LOCAL AMENITIES

All necessary shops like supermarkets, drug store, cash machines, fuel stations and a pharmacy are in Leeder, 1km away from the track.

