



**STAGE 1:
The Track**

**The Track:
Auto Modelbouw Club Apeldoorn (AMCA)
Address:**

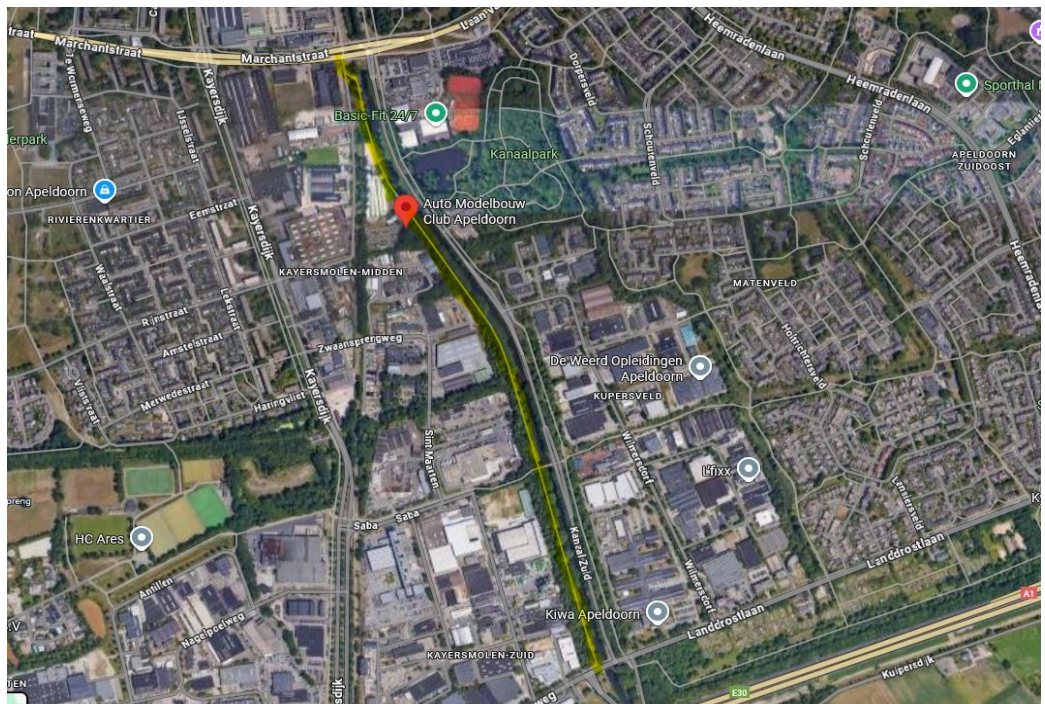
**Kanaal Zuid 134, 7332 BD Apeldoorn
The Netherlands**

AMCA
Auto Modelbouw Club Apeldoorn



Driving to the track:

The 'Kanaal zuid' is the main road; the track itself is located on a dirt road on the other side of the river. Access to the track is either from the south or north. Parking places are near to the track.



(Source: Google maps)

The club has a large canteen and seating area.
The paddock is covered and offers space for approx. 100 drivers at standing workstations, which are equipped with electricity and lighting. There is a toilet and a separate grinding area in the paddock.



The paddock (Source: AMCA Facebook)



The paddock (Source: AMCA Facebook)



There is an LED scoreboard at the track that displays the rankings, times and average speeds.