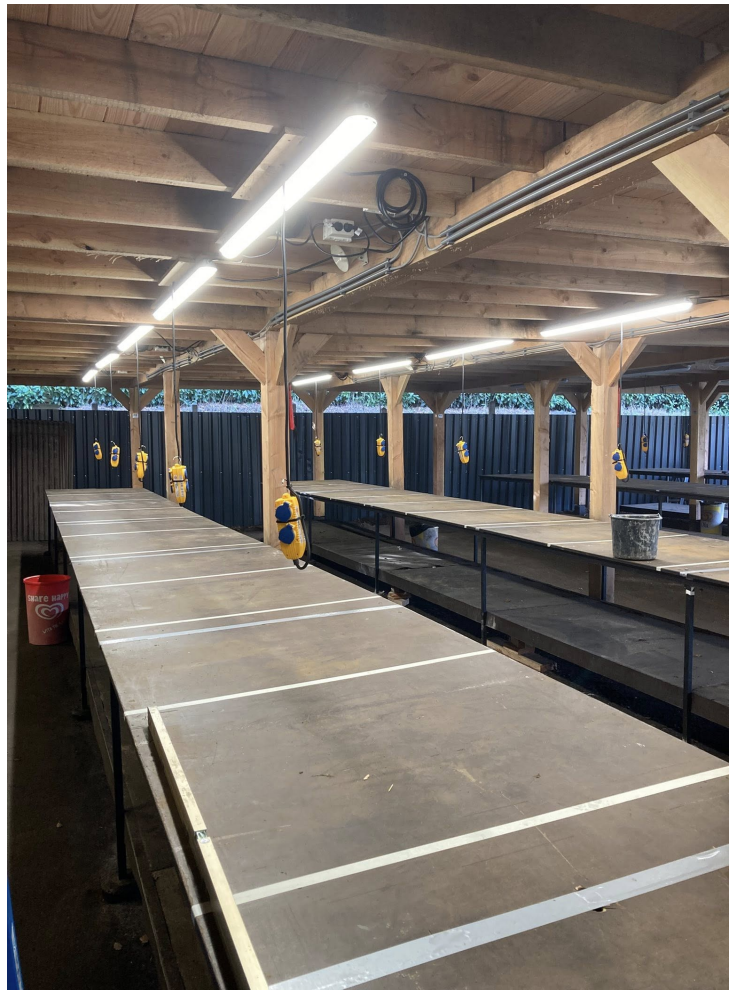




STAGE 3:
All about the Race

NEW Paddock!

The club has refurbished its paddock with new tables. All you need now is a chair and a multi-socket adapter for your working place.



The new paddock

The Entry

The entry will open Sunday 12th of April, 12.00 o'clock via myrcm.ch

After the entry you have to pay the entry fee by bank transfer (**no** Paypal) to the club. Before that, your name will be on the waiting list. After successful payment (will be checked 2-3 times per week) you moved to the entrylist.

The entry fee will be **50€** and include following:

- Friday Practise
- Race on Saturday + Sunday
- BBQ Dinner + 1 softdrink Saturday Evening
- 2€ for the RC Lemans Series (Homepage + Organisation + Trophies)

Camping + Hotel

Sleeping + camping at the track is **not** possible!
There are some Hotels and Campingplaces near the track

Hotels:

- Fletcher Hotel-Restaurant Het Veluwe Bos 3*** ~ 99€ ~ 5,2km
- Hotel et le Café de Paris 3*** ~173€ ~ 4,6km
- Fletcher Hotel-Restaurant Apeldoorn 3*** ~ 119€ ~ 7,6km

Prices are approximate and based on a double room for two people per night

Camping:

- Ardoer camping Bosgraaf ~ 7,2km
- Camping Vinkenkamp B.V. ~6,8km

Supporting programme

On Saturday evening, there will be a BBQ for everyone, during which a big raffle with prizes will be held.

We would like to thank the following sponsors for the raffle and the Trophys:

